

## Nearly three million nights

Nights at accommodation establishments in Helsinki again set a new record, rising to 2,984,100. The increase compared with the year before was 8.2%. Growth was mainly recorded in domestic nights, which were up 12.9%. Foreigners' nights rose by 5.3%. Domestic nights totalled 1,185,400 and foreigners' nights 1,798,800.

Nights were up every month of the year. The biggest increases, amounting to 11-12%, were in January, March and June. Growth in foreigners' nights was strongest in May (+17%), thanks to the Eurovision Song Contest. Domestic nights rose clearly in the second half of the year (+19%). In June domestic nights were up 33% compared with the year before.

Nights increased in Helsinki more strongly than in Finland as a whole or in the other Nordic capitals. Finland posted growth of 4.7%, Stockholm 6%, Copenhagen 4% and Oslo 1%.

## Russians move to the top

Foreigners accounted for 60% of nights in Helsinki. Visitors from Russia headed the list after a break of nine years. Other big markets were Germany, Britain, Sweden, the United States and Japan in that order. Next on the list came Italy, Spain, France, Estonia, the Netherlands, Norway and China.

## Occupancy rate continues to climb

Business travel accounted for about 50% of nights, leisure travel 45% and other travel 5%. The annual occupancy rate at accommodation establishments in Helsinki broke the 70% mark for the first time, reaching 70.4%. The average price of overnight accommodation in Helsinki (€72.22) was slightly lower than the previous two years. Registered accommodation capacity in Helsinki averaged 15,023 beds in 2007, which was nearly 380 more than the year before.

## Length of stay on the decline

Most visitors to Helsinki are day travellers. Excluding day travellers, in 2007 visitors spent an average of 1.73 nights in Helsinki, down slightly from the year before (1.76 nights). The figure declined among both foreigners (1.99 nights) and domestic visitors (1.45 nights).

## Continued growth in air traffic

The number of passengers at Helsinki-Vantaa Airport set a new record of 13.09 million, up 7.8% compared with the year before. Passengers rose by 10.8% in international traffic while falling by 1.8% in domestic traffic.

The number of passengers at the Port of Helsinki totalled 8.50 million, remaining practically unchanged compared with the year before. Estonian and Swedish traffic were down slightly while German traffic rose sharply, with Superfast Ferries having moved from Hanko to Helsinki.

## Slight decline in cruise traffic, growth in number of congresses

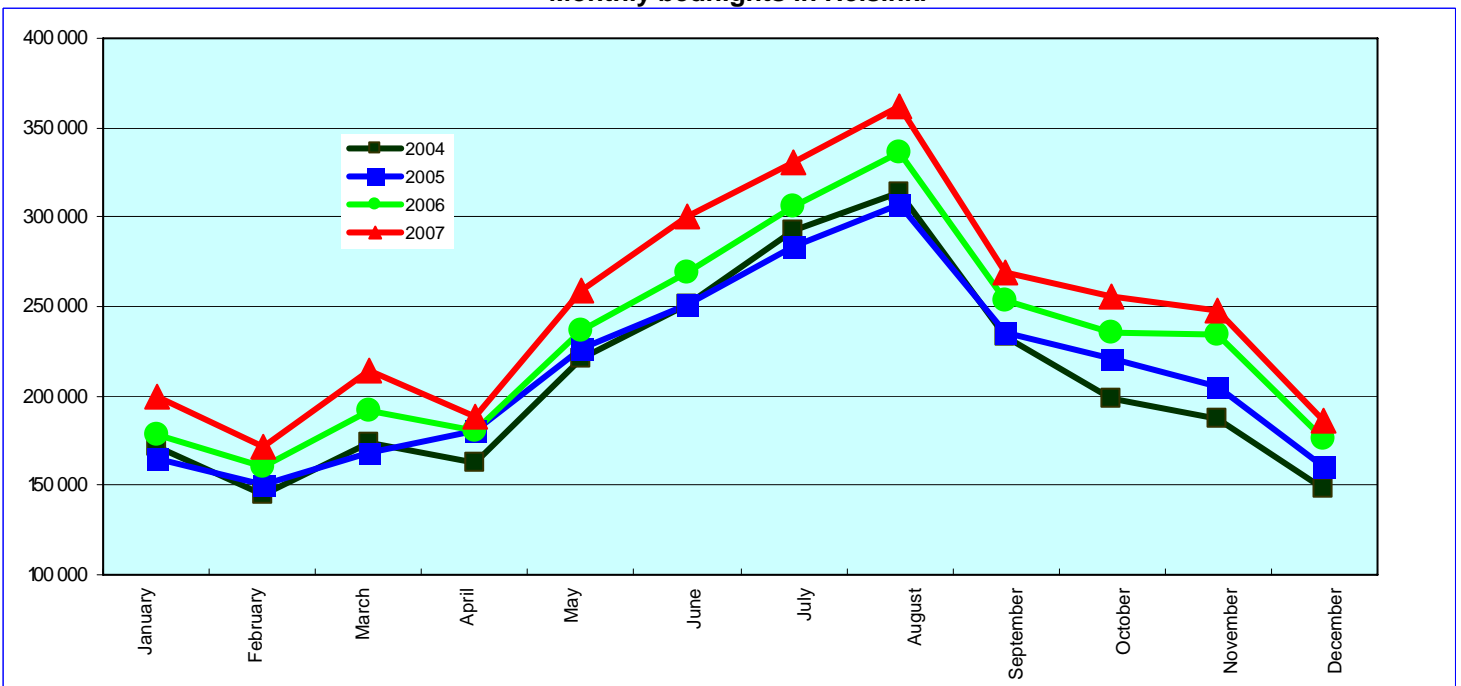
Helsinki received 238 international cruises during the summer season, and these brought 260,000 cruise passengers for a day's visit. The number of cruise passengers fell by 4% and the number of cruises by 8%.

Helsinki hosted 125 international congresses with a total of 24,620 participants. The number of congresses rose by 60% but the number of participants remained unchanged compared with the year before.

## Linnanmäki clearly most popular

In 2007 Linnanmäki Amusement Park remained the most popular attraction in Helsinki, with 1.20 million visitors. It was followed by Suomenlinna, Temppeliaukio Church, the Uspenski Cathedral and the Helsinki Zoo. Among these Suomenlinna and the Uspenski Cathedral had more visitors than the year before.

Monthly bednights in Helsinki



## Monthly bednights in Helsinki

	2006			2007			Change-%		
	Total	Domestic	Foreign countries	Total	Domestic	Foreign countries	Total	Domestic	Foreign countries
January	178 120	73 623	104 497	200 141	79 315	120 826	12,4 %	7,7 %	15,6 %
February	160 394	74 902	85 492	172 044	80 539	91 505	7,3 %	7,5 %	7,0 %
March	192 009	85 165	106 844	213 624	92 113	121 511	11,3 %	8,2 %	13,7 %
April	180 077	76 540	103 537	187 944	75 993	111 951	4,4 %	-0,7 %	8,1 %
May	236 753	94 605	142 148	258 878	92 224	166 654	9,3 %	-2,5 %	17,2 %
June	268 973	77 057	191 916	300 242	102 611	197 631	11,6 %	33,2 %	3,0 %
July	305 687	109 633	196 054	330 398	132 096	198 302	8,1 %	20,5 %	1,1 %
August	335 860	98 172	237 688	361 788	114 019	247 769	7,7 %	16,1 %	4,2 %
September	252 823	82 424	170 399	269 031	101 204	167 827	6,4 %	22,8 %	-1,5 %
October	235 937	101 368	134 569	255 426	115 545	139 881	8,3 %	14,0 %	3,9 %
November	234 837	105 925	128 912	247 875	122 601	125 274	5,6 %	15,7 %	-2,8 %
December	176 299	70 526	105 773	186 724	77 091	109 633	5,9 %	9,3 %	3,6 %
<b>Total</b>	<b>2 757 769</b>	<b>1 049 940</b>	<b>1 707 829</b>	<b>2 984 115</b>	<b>1 185 351</b>	<b>1 798 764</b>	<b>8,2 %</b>	<b>12,9 %</b>	<b>5,3 %</b>

## Travel brisk throughout the year

Nights in Helsinki were up every month of the year. The biggest growth was in January, March and May. Domestic nights were down in April and May but rose clearly in the second half of the year. In June-December domestic nights were up 18.6%. The strongest growth was in June (+33.2%), October (+22.8%) and July (+20.5%). Foreigners' nights were up every month except September and November. Growth was strongest in May (+17.2%), January (+15.6%) and March (+13.7%).

## Nearly 16% share of nights in Finland

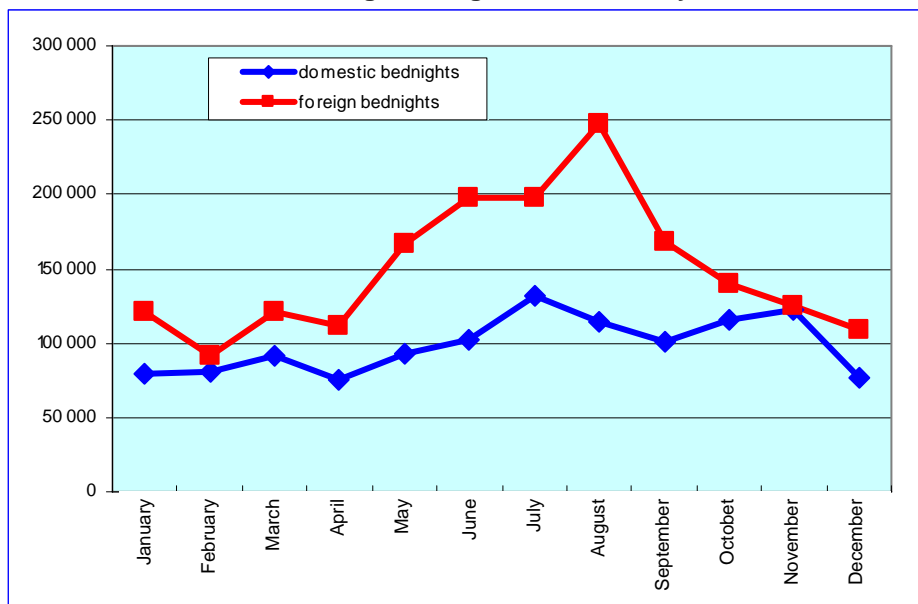
Helsinki's share of nights in Finland was 15.7% in 2007. This was 0.6 percentage points higher than the year before. The Helsinki metropolitan area had a share of 20.4% and the entire Uusimaa region 23.3%.

Foreigners' nights in Helsinki reached nearly 1.8 million and set a new record of 1,798,800. This was 33.8% of foreigners' nights in Finland. Helsinki's share of domestic nights was 8.7%. The last time it was higher than this was in 2000. Total nights in Helsinki (2,984,100) reached an all-time high.

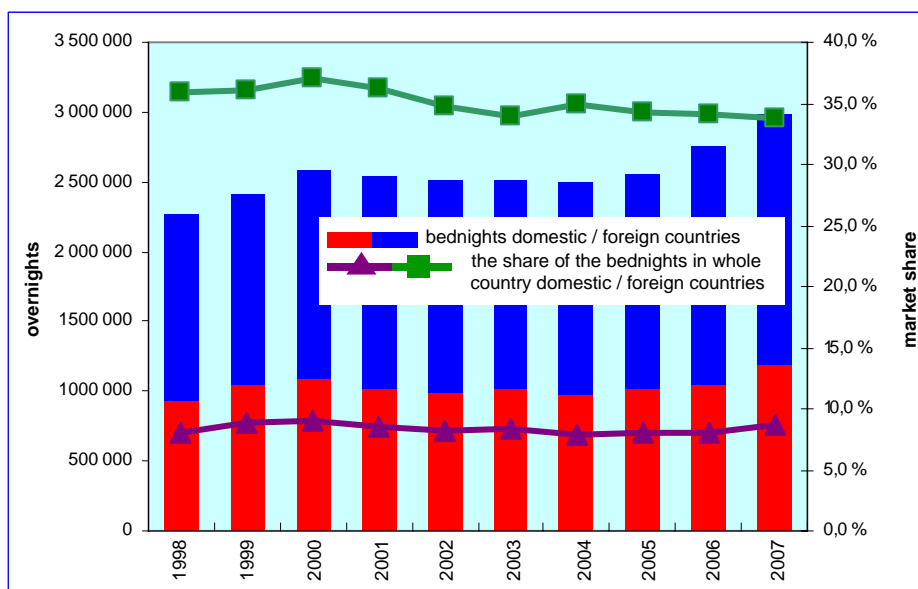
## 24 600 congress visitors

Helsinki hosted 125 international congresses with a total of 24,620 participants in 2007. The number of congresses rose clearly by 60% but the number of participants remained practically unchanged compared with the year before. Helsinki's share of international congresses in Finland (29%) rose clearly from 2006. Its share of congress visitors (41%) remained roughly unchanged. Finland hosted 438 international congresses in 2007, with a total of 60,790 participants.

## Finnish and foreign bednights in Helsinki by month



## Bednights in Helsinki and the share of the bednights in the whole country



## International congresses in 2000-2007

Year	Congresses			Congress guests		
	Helsinki	Whole country	Share of Helsinki	Helsinki	Whole country	Share of Helsinki
2001	89	282	32 %	20 680	55 370	37 %
2002	85	278	31 %	19 110	50 600	38 %
2003	102	297	34 %	29 340	55 100	53 %
2004	102	316	33 %	21 620	54 160	40 %
2005	68	265	26 %	16 600	40 930	41 %
2006	78	376	21 %	25 060	63 050	40 %
2007	125	438	29 %	24 620	60 790	41 %

## Bednights in Helsinki by country of residence

### Strong rise in Russians' nights

Domestic visitors accounted for 40% of nights in Helsinki and foreigners 60%. Foreigners' nights rose by 99,900 or 5.3% compared with the year before. The biggest growth was on the Russian market. The German, Japanese, Spanish, Swedish and Estonian markets also developed favourably. Among Helsinki's main markets, visitors from Britain, Italy, France, the Netherlands and China declined.

For the first time since 1998 the largest number of nights was recorded for visitors from Russia (+22.1%). They passed Germans (+10.8%), who held the top spot the year before. Brits (-1.4%) came third, followed by visitors from Sweden (+4.1%) and the United States (+2.3%).

Among smaller markets significant increases were recorded for visitors from India, Lithuania, Poland and South Korea, for instance.

### Highest market share among long-haul countries

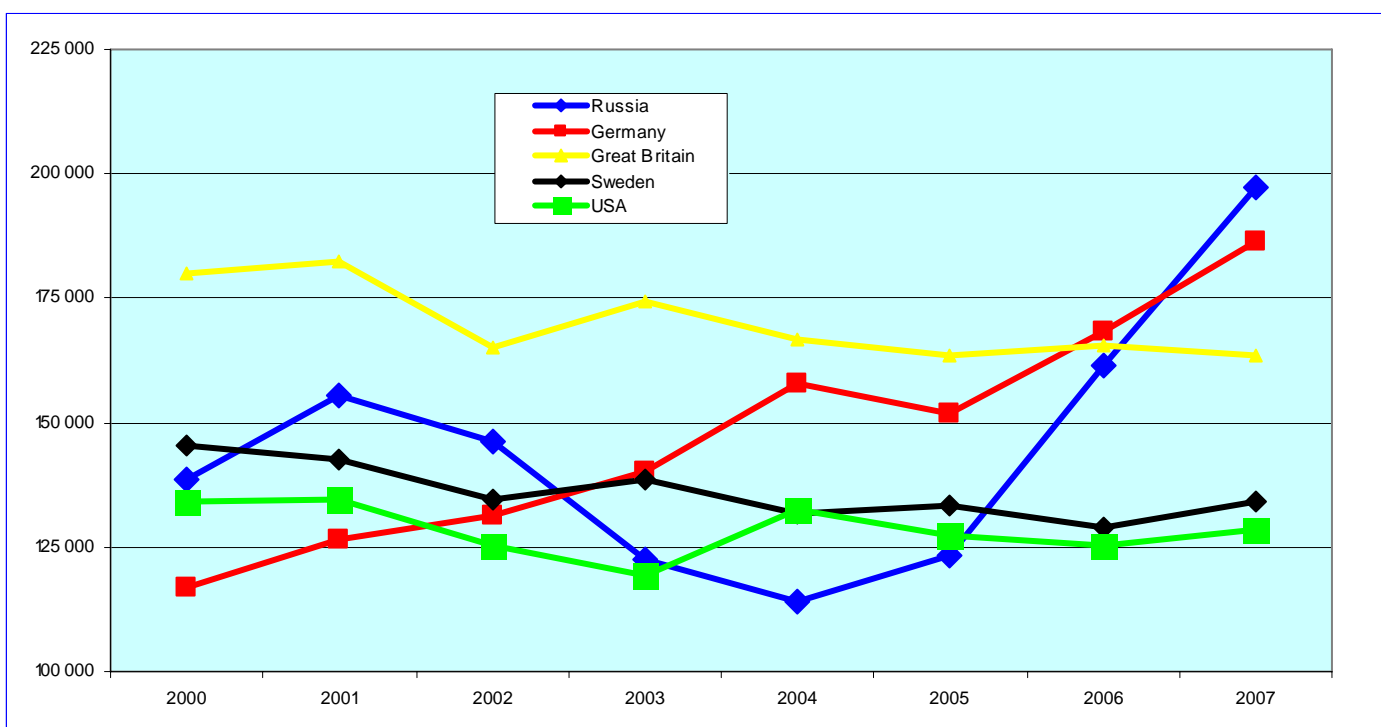
Helsinki accounted for over half of nights in Finland for visitors from the United States (59.3%) and Japan (57.9%) and nearly half for visitors from India and China. Turning to Europe, Helsinki's share was highest among visitors from Iceland, Spain and Greece. It was lowest among visitors from Sweden and France.

### Decline in length of stay

Excluding day travellers, in 2007 visitors spent an average of 1.73 nights in Helsinki, down slightly from the year before (1.76 nights). The figure declined for both foreigners (1.99 nights) and domestic visitors (1.45 nights). Visitors from North America and India generally stayed longer, while Swedish, Russian, Chinese and Japanese visitors averaged just 1.6-1.8 nights in Helsinki.

	I-XII/2006	I-XII/2007	Change 06>07 %	Whole country Change 06>07 %	I-XII/2005	Change 05>06 %
<b>Total</b>	<b>2 757 769</b>	<b>2 984 115</b>	8,2 %	4,7 %	<b>2 555 470</b>	7,9 %
<b>Foreign countries</b>	<b>1 707 829</b>	<b>1 798 764</b>	5,3 %	6,3 %	<b>1 539 057</b>	11,0 %
<b>Finland</b>	<b>1 049 940</b>	<b>1 185 351</b>	12,9 %	4,0 %	<b>1 016 413</b>	3,3 %
Russia	161 620	197 383	22,1 %	26,1 %	123 127	31,3 %
Germany	168 344	186 574	10,8 %	7,0 %	151 959	10,8 %
Great Britain	165 708	163 383	-1,4 %	7,8 %	163 394	1,4 %
Sweden	128 816	134 139	4,1 %	-1,2 %	133 265	-3,3 %
USA	125 509	128 372	2,3 %	4,3 %	127 249	-1,4 %
Japan	84 287	90 422	7,3 %	4,7 %	75 269	12,0 %
Italy	69 423	68 161	-1,8 %	0,6 %	58 654	18,4 %
Spain	60 706	64 957	7,0 %	10,6 %	50 866	19,3 %
France	58 850	55 891	-5,0 %	2,3 %	57 005	3,2 %
Estonia	50 649	53 371	5,4 %	7,1 %	48 353	4,7 %
The Netherlands	54 993	52 493	-4,5 %	-3,5 %	54 326	1,2 %
Norway	48 812	47 585	-2,5 %	-2,4 %	52 603	-7,2 %
China	51 340	46 499	-9,4 %	-3,2 %	41 098	24,9 %
Denmark	45 220	43 961	-2,8 %	-5,3 %	43 614	3,7 %
Switzerland	34 628	36 453	5,3 %	3,8 %	30 317	14,2 %
India	21 943	24 320	10,8 %	25,5 %	14 166	54,9 %
Australia	22 516	22 627	0,5 %	3,4 %	17 786	26,6 %
Belgium	24 533	22 185	-9,6 %	-6,2 %	20 167	21,6 %
Poland	19 711	21 373	8,4 %	-6,3 %	15 845	24,4 %
Austria	16 214	16 965	4,6 %	-2,5 %	15 993	1,4 %
Canada	15 108	14 926	-1,2 %	5,7 %	15 108	0,0 %
Greece	14 629	13 125	-10,3 %	-8,6 %	10 168	43,9 %
South Korea	9 837	11 213	14,0 %	-10,6 %	8 575	14,7 %
Ireland	11 250	9 900	-12,0 %	2,9 %	8 111	38,7 %
Hungary	11 273	9 757	-13,4 %	-15,3 %	9 248	21,9 %
Lithuania	7 554	9 202	21,8 %	25,4 %	5 493	37,5 %
Latvia	8 776	9 196	4,8 %	19,2 %	7 020	25,0 %
Czech Republik	8 852	8 647	-2,3 %	7,9 %	7 248	22,1 %
Portugal	8 576	8 485	-1,1 %	-2,0 %	6 474	32,5 %
Israel	8 410	6 906	-17,9 %	14,3 %	5 166	62,8 %
Turkey	5 901	6 369	7,9 %	23,0 %	4 634	27,3 %
Island	6 103	6 352	4,1 %	6,0 %	6 615	-7,7 %
Taiwan	3 460	3 601	4,1 %	-2,7 %	3 929	-11,9 %
Ukraine	2 612	3 461	32,5 %	45,5 %	2 247	16,2 %
New Zealand	2 391	2 272	-5,0 %	-9,6 %	2 464	-3,0 %
Other countries	169 275	198 238	17,1 %	6,7 %	141 501	19,6 %

### Foreign bednights in Helsinki by country of residence 2000-2007



## Strongest increase in leisure travel

In 2007 leisure travel rose clearly in Helsinki. Leisure travel accounted for 44.8% of nights while business travel's share fell slightly to 49.8%. Other nights' share was 5.4%.

Leisure nights reached all-time highs for both domestic and foreign visitors in 2007. Among domestic visitors leisure nights nearly equalled business nights. Measured in nights, domestic business travel has remained on roughly the same level for the past three years. Foreign business travel turned down after four consecutive years of growth, while nights in foreign leisure travel rose strongly and approached the figure for foreign business travel.

## Occupancy rate continues to climb

In 2007 the occupancy rate at accommodation establishments in Helsinki was 70.4%, another all-time high. The previous record was set the year before, when the figure was 69.0%. The occupancy rate in Finland as a whole was clearly lower, 50.2%.

The average price of overnight accommodation in Helsinki was €72.22, which was more than one euro lower than in 2006 and 2005. The highest average price was during the Eurovision Song Contest in May, when it broke the €90 mark for the first time (€90.05). The average price of a hotel room rose by more than €2.50 to €107.01 last year. In Finland the average price of overnight accommodation was €47.15 and the average price of a hotel room was €84.87.

Accommodation sales in Helsinki rose clearly in 2007, totalling €215.70 million. The increase compared with the year before was more than €13 million.

## Capacity exceeds 15,000 beds

Registered accommodation capacity in Helsinki totalled 15,023 beds in 2007. This was 380 more than the year before. In the Helsinki metropolitan area capacity totalled 20,145 beds and in the Uusimaa region 24,056 beds.

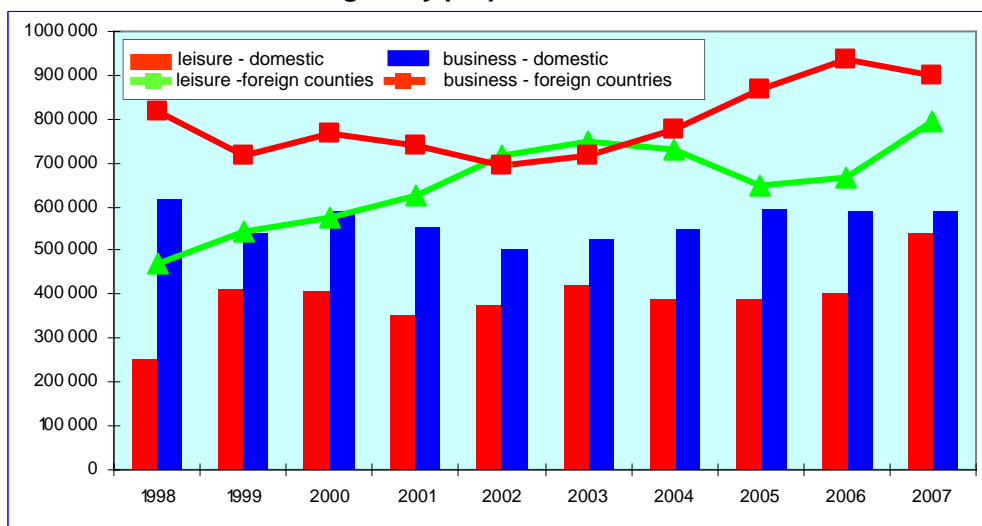
Helsinki's 48 hotels had an average of 7,717 rooms and 14,334 beds in 2007.

Helsinki accounted for 11.5% of registered accommodation capacity in Finland.

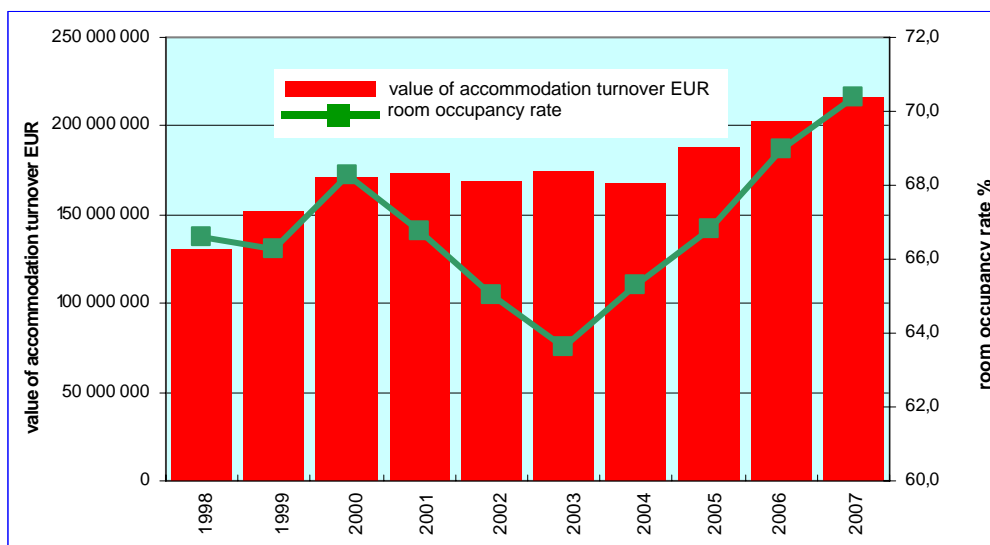
## Bednights by purpose of visit

	Leisure	Share %	Business	Share %	Other purpose	Share %
2001	976 295	38,4 %	1 291 010	50,8 %	272 148	10,7 %
2002	1 092 277	43,6 %	1 195 411	47,7 %	216 723	8,7 %
2003	1 168 927	46,5 %	1 241 331	49,4 %	101 914	4,1 %
2004	1 117 410	44,7 %	1 322 293	52,9 %	57 802	2,3 %
2005	1 038 797	40,6 %	1 458 895	57,1 %	57 778	2,3 %
2006	1 069 948	38,8 %	1 525 392	55,3 %	162 429	5,9 %
2007	1 337 034	44,8 %	1 486 753	49,8 %	160 328	5,4 %

## Bednights by purpose of visit 1998-2007



## The value of accommodation turnover (EUR) and room occupancy rate in Helsinki



## Price per night, room occupancy rate and the value of accommodation turnover

	price per night €	price per hotel room €	occupancy rate %	value of accommodation turnover €
2001	68,64	97,55	66,8	173 789 737
2002	67,68	97,50	65,0	168 546 249
2003	69,52	100,42	63,6	174 211 495
2004	67,27	97,75	65,3	167 485 134
2005	73,54	102,82	66,8	187 808 746
2006	73,50	104,39	69,0	202 266 471
2007	72,22	107,01	70,4	215 704 130

## Accommodation capacity in Helsinki

	Number of units		Number of rooms		Number of beds	
	Hotels	Total	Hotels	Total	Hotels	Total
2002	44	58	6 895	7 318	13 041	14 076
2003	46	59	7 136	7 452	13 610	14 403
2004	44	55	6 838	7 139	13 172	13 976
2005	44	54	7 148	7 383	13 674	14 365
2006	45	56	7 425	7 647	13 951	14 642
2007	48	57	7 717	7 937	14 334	15 023

## Continued growth in international air traffic

The number of passengers at Helsinki-Vantaa Airport totalled 13.09 million in 2007, compared with 12.14 million the year before. The number of passengers rose by 10.8% in international traffic while falling by 1.8% in domestic traffic. Total traffic rose by 7.8%.

International passengers showed a clear increase in every month of the year. Domestic passengers, on the other hand, were up only in January, March and October.

International traffic was busiest in June and slowest in February. Domestic passengers peaked in March, with August the slowest month. International traffic's share of total traffic was 78%, two percentage points higher than the year before.

Helsinki-Vantaa Airport's share of airline passengers in Finland was over 76%.

## Ship traffic practically unchanged

In 2007 the number of passengers at the Port of Helsinki totalled 8.50 million, down 0.2% compared with the year before. Tallinn traffic accounted for 68% of the total, Stockholm traffic 29% and German traffic 3%. Passengers on services between Helsinki and Tallinn totalled 5.80 million, down 1.6% compared with the year before. Passengers on services to and from Sweden fell by 4.2% and totalled 2.45 million. Passengers between Helsinki and Germany rose sharply, with Superfast Ferries having moved from Hanko to Helsinki and Finnlines increasing its capacity. The number of passengers in this traffic totalled 248,000.

Helsinki's share of international passenger traffic at Finnish ports was 56.5%.

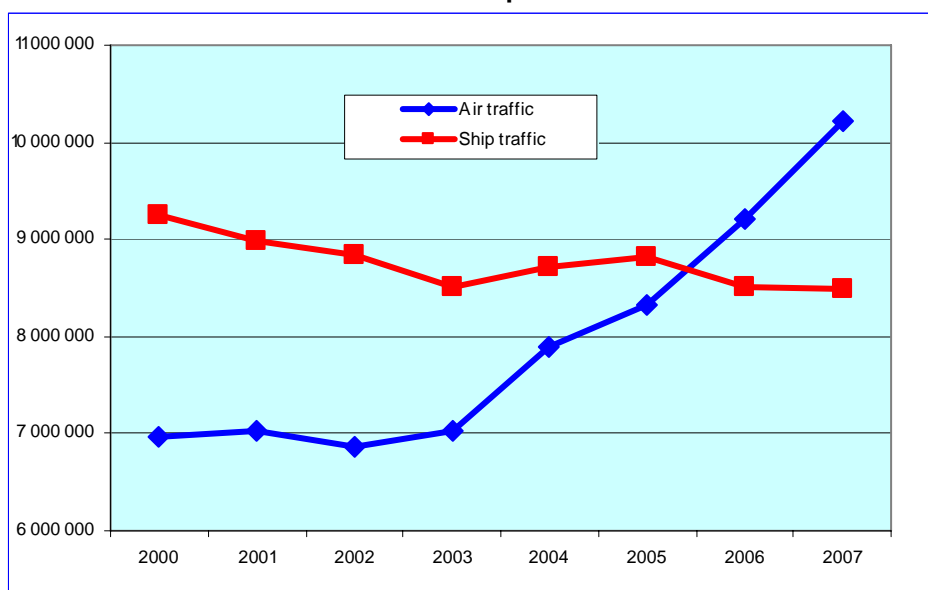
## Slight decline in cruise traffic

A total of 238 international cruises visited Helsinki in 2007. This was 21 less than the year before. Ships were larger and the number of passengers only fell by 4%, totalling 260,000. According to a survey conducted by Taloustutkimus Oy, the average cruise passenger spends 128 euros in Helsinki, mainly on shopping, sight-seeing and excursions. In summer 2007 cruises brought Helsinki about €24 million in tourist income. Nearly €8 million is also received in the form of fairway, piloting, harbour and service charges. This brings the total amount of income to about €32 million.

## Passenger air traffic at Helsinki-Vantaa Airport

	International		Domestic		Total	
	2006	2007	2006	2007	2006	2007
January	628 859	705 524	233 955	242 001	862 814	947 525
February	621 829	695 727	256 275	254 228	878 104	949 955
March	742 636	840 761	329 364	330 183	1 072 000	1 170 944
April	748 593	800 241	276 741	260 760	1 025 334	1 061 001
May	795 406	838 642	243 935	240 355	1 039 341	1 078 997
June	912 014	989 379	236 155	230 176	1 148 169	1 219 555
July	628 859	705 524	233 955	242 001	862 814	947 525
August	846 214	936 833	203 306	202 761	1 049 520	1 139 594
September	839 117	917 721	261 329	253 286	1 100 446	1 171 007
October	802 080	910 724	235 712	251 443	1 037 792	1 162 167
November	702 251	765 296	268 810	261 760	971 061	1 027 056
December	687 807	759 311	232 520	216 109	920 327	975 420
<b>I-XII</b>	<b>9 216 409</b>	<b>10 214 399</b>	<b>2 926 464</b>	<b>2 874 149</b>	<b>12 142 873</b>	<b>13 088 548</b>
Change 2006-2007		10,8 %		-1,8 %		7,8 %
Share % 2006	75,9 %		24,1 %		100,0 %	
Share % 2007		78,0 %		22,0 %		100,0 %

## International passenger traffic at the ports of Helsinki and at Helsinki-Vantaa Airport 2000-2007



## Passenger traffic at the ports of Helsinki according to country of origin or destination

	Sweden		Estonia		Germany		Whole traffic	
	2006	2007	2006	2007	2006	2007	2006	2007
January	192 140	189 786	280 922	279 052	2 283	13 391	481 507	483 282
February	222 253	206 892	313 457	328 835	3 002	14 568	538 712	550 295
March	189 398	186 542	350 558	377 806	3 589	18 618	543 545	582 966
April	219 319	205 363	436 838	471 947	4 016	18 594	660 173	695 904
May	210 542	193 886	591 922	525 119	3 859	20 030	808 723	739 035
June	238 835	241 180	642 747	600 869	4 594	28 782	886 287	870 831
July	281 672	284 011	784 593	760 004	4 980	40 361	1 071 889	1 084 376
August	239 084	235 952	655 406	653 392	6 122	34 787	900 728	924 131
September	166 046	177 574	496 347	470 512	8 357	20 460	670 750	668 546
October	220 225	189 917	498 254	464 383	6 474	18 950	724 953	673 250
November	181 147	160 344	424 685	419 969	5 902	13 158	611 734	593 471
December	197 829	180 048	416 217	447 044	4 916	6 215	618 962	633 307
<b>I-XII</b>	<b>2 558 490</b>	<b>2 451 495</b>	<b>5 891 946</b>	<b>5 798 932</b>	<b>58 094</b>	<b>247 914</b>	<b>8 517 963</b>	<b>8 499 394</b>
<b>Change 2006-07</b>		-4,2 %		-1,6 %		326,7 %		-0,2 %
<b>Osuus % 2006</b>	30,0 %		69,2 %		0,7 %		100,0 %	
<b>Osuus % 2007</b>		28,8 %		68,2 %		2,9 %		100,0 %

## International cruises visiting Helsinki

Year	Ships	Change %	Passengers	Change %
2003	191	+3 %	161 000	+24 %
2004	208	+9 %	195 000	+22 %
2005	247	+19 %	240 000	+23 %
2006	259	+5 %	270 000	+12 %
2007	238	-8 %	260 000	-4 %

## Tourist Information serves 574,000 customers

The Helsinki City Tourist and Convention Bureau's Tourist Information at Pohjoisesplanadi 19 would rank as the sixth most popular spot in Helsinki with nearly 420,000 visitors last year. The largest number (84,500) was recorded in August. The Tourist Information at the central railway station served over 48,000 visitors and the new desk at the Heranesaari cruise terminal served over 10,500 cruise passengers. Helsinki Helps served nearly 83,000 people in the city centre, 10% more than the summer before.

In addition 8,100 customers were served by phone and about 5,000 by e-mail, letter or fax. All in all Tourist Information served nearly 574,000 customers in 2007. The figure the year before was 560,000. The Helsinki City Tourist and Convention Bureau also recorded over 1.5 million visits on its website (+54%).

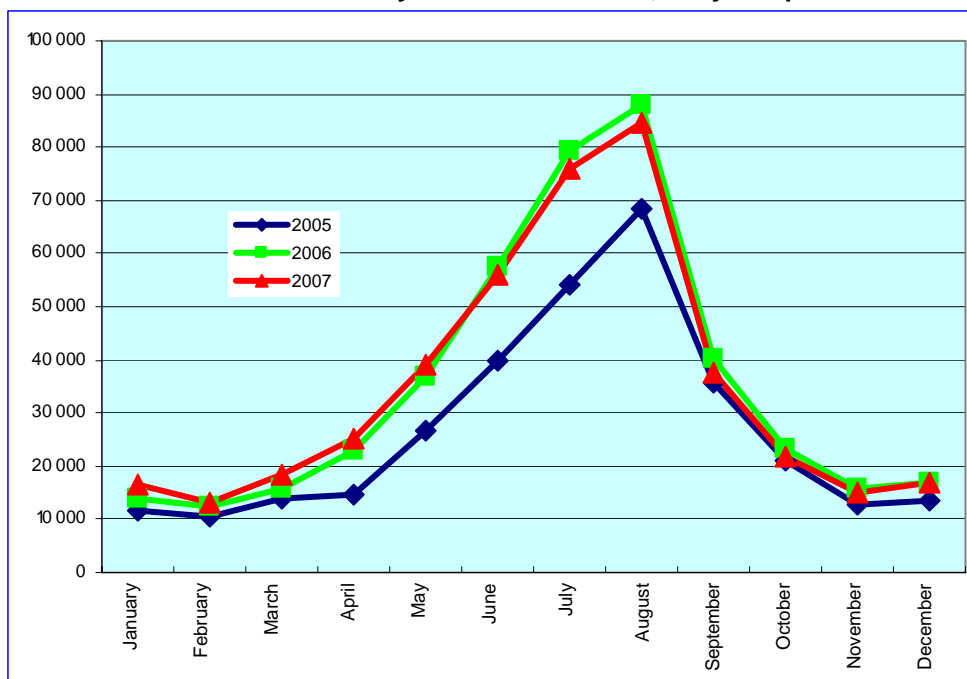
## Linnanmäki clearly most popular

In 2007 Linnanmäki Amusement Park remained the most popular attraction in Helsinki, with 1.20 million visitors, though the figure fell by 10.9% compared with the year before. Next on the list was Suomenlinna with 690,000 visitors. Tempeliahaukio Church, the Uspenski Cathedral and the Helsinki Zoo also attracted over half a million visitors last year.

The Museum of Contemporary Art, Kiasma remained the most popular museum. It was followed by the Finnish National Gallery, Ateneum in second place and by the City Art Museum, Tennis-palatsi, which recorded strong growth. The National Museum of Finland and the Design Museum also attracted over 100,000 visitors each.

By far the most popular event was the Helsinki Festival, which attracted 307,000 visitors. This was 19% more than the year before.

### Visitors to the Helsinki City Tourist Information, Pohjoisesplanadi 19



### Visitors to main Helsinki attractions

	2006	2007	Change-%
Linnanmäki Amusement Park	1 347 000	1 200 000	-10,9 %
Suomenlinna	678 000	690 000	1,8 %
Tempeliahaukio Church	579 570	558 990	-3,6 %
Uspenski Cathedral	516 500	530 800	2,8 %
Helsinki Zoo	521 671	510 963	-2,1 %
Grand Casino Helsinki	295 612	321 648	8,8 %
Helsinki Festival	258 145	307 357	19,1 %
Helsinki Cathedral	352 453	278 116	-21,1 %
Sea Life Helsinki	255 258	264 353	3,6 %
Museum of Contemporary Art, Kiasma	234 213	183 305	-21,7 %
National Gallery, Ateneum	142 382	147 098	3,3 %
Helsinki City Art Museum / Tennis Palace	102 850	140 557	36,7 %
National Museum of Finland	97 603	109 245	11,9 %
Design Museum	136 122	104 758	-23,0 %
University of Helsinki Botanical Gardens	74 800	77 900	4,1 %
Helsinki City Winter Garden	84 037	75 000	-10,8 %
World Village Festival	60 000	70 000	16,7 %
Seurasaaari Open-Air Museum	59 241	49 296	-16,8 %
Post Office Museum	37 257	47 770	28,2 %
Didrichsen Art and Cultural Museum	41 186	46 471	12,8 %
Olympic Stadium	43 025	44 335	3,0 %
Helsinki Cathedral crypt	33 642	42 000	24,8 %
Amos Anderson Art Museum	73 502	41 119	-44,1 %
Gardenia Helsinki	30 000	35 000	16,7 %
Tuska Festival	33 000	33 000	0,0 %
Helsinki City Art Museum / Meilahti	23 063	30 063	30,4 %
Sinebrychoff Art Museum	26 192	25 359	-3,2 %
Museum of Finnish Architecture	..	24 000	..
Sederholm House / Helsinki City Museum	8 017	22 025	174,7 %
Submarine Vesikko / Military Museum	23 171	21 737	-6,2 %
Urho Kekkonen Museum Tamminiemi	20 312	20 467	0,8 %
Finnish Sports Museum	16 655	17 771	6,7 %
Helsinki City Museum	13 513	15 763	16,7 %
Technical Museum	19 065	15 250	-20,0 %
Finlandia House / Info Shop	8 417	12 000	42,6 %
The Finnish Museum of Photography	18 060	11 920	-34,0 %
Seurasaaari National Midsummer-Eve	10 000	11 000	10,0 %
Helsinki City Art Museum / Kluuvi Galleria	10 845	10 688	-1,4 %
Musica Nova	10 200	10 500	2,9 %



Helsingin kaupunki

Matkailu- ja kongressitoimisto  
Pohjoisesplanadi 19, PL 28  
00099 Helsingin kaupunki  
puh. (09)310 13300, faksi (09)310 13301  
tourist.info@hel.fi, www.visithelsinki.fi

City of Helsinki

Tourist & Convention Bureau  
Pohjoisesplanadi 19, P.O. Box 28  
FIN-00099 City of Helsinki  
puh. (09)310 13300, fax (09)310 13301  
tourist.info@hel.fi, www.visithelsinki.fi

Lähteet - Sources

Tilastokeskus - Statistics Finland / www.stat.fi  
Merenkululaitos - Finnish Maritime Administration / www.fma.fi  
Ilmailulaitos - Finavia / www.finavia.fi  
Finland Convention Bureau / www.fcb.fi

Koonnut - Compiled by  
Art-Travel Oy Heikki Artman